



State Vehicular Recreation Area Ocotillo Wells

5172 Highway 78, Box 10 • Borrego Springs, CA 92004 • 760.767.5391

Park Rules and Regulations

You are responsible for knowing park rules and regulations. All provisions of the California Vehicle Code are enforced. A copy may be found at: www.dmv.ca.gov/pubs/vctop/vc/vc.htm. If you have questions, please contact the park staff, stop at the Discovery Center, or call (760) 767-5393.

The term OHV means off-highway vehicle. Any motor vehicle operated off-highway is an OHV. A highway licensed vehicle is an OHV when operated off of the highway. Vehicles having green and red stickers are OHVs.

ALCOHOL: Open container and DUI laws apply off-highway just as they do on-highway. Don't drink and drive. Alcohol is only allowed in your campsite.

ATV LAWS: There are laws which apply specifically to the operation of ATVs only. (For more information, please see reverse page.)

LIGHTS: OHVs operated between sunset and sunrise must display at least one lighted white headlight and one lighted red taillight visible from 200 feet.

NOISE EMISSIONS: The law limits noise emissions from all OHVs. Noise emissions for most OHVs are limited to not more than 96 dBA when measured from a distance of 20 inches using standardized test procedures. For more specific information, go to: www.ohv.parks.ca.gov/noise_emissions.

REACH AND OPERATE ALL CONTROLS: All operators of off-highway vehicles must be able to reach and operate all controls.

REGISTRATION: When operating an OHV, you must display either a license plate or an OHV sticker. OHV stickers include "Green Stickers," "Red Stickers," California Nonresident OHV Use Permits, and OHV stickers from states that have an OHV program.

RED STICKER RIDING SEASON: Red stickers are allowed to operate in the SVRA from October 1st - May 31st. These dates are established by the California Air Resources Board (CARB) and are subject to change. Please call the park for updated information.

SPEED: Please follow posted speed limits throughout the park. In camping and developed areas, keep speeds to 15 mph or less. Never drive faster than is safe for conditions.

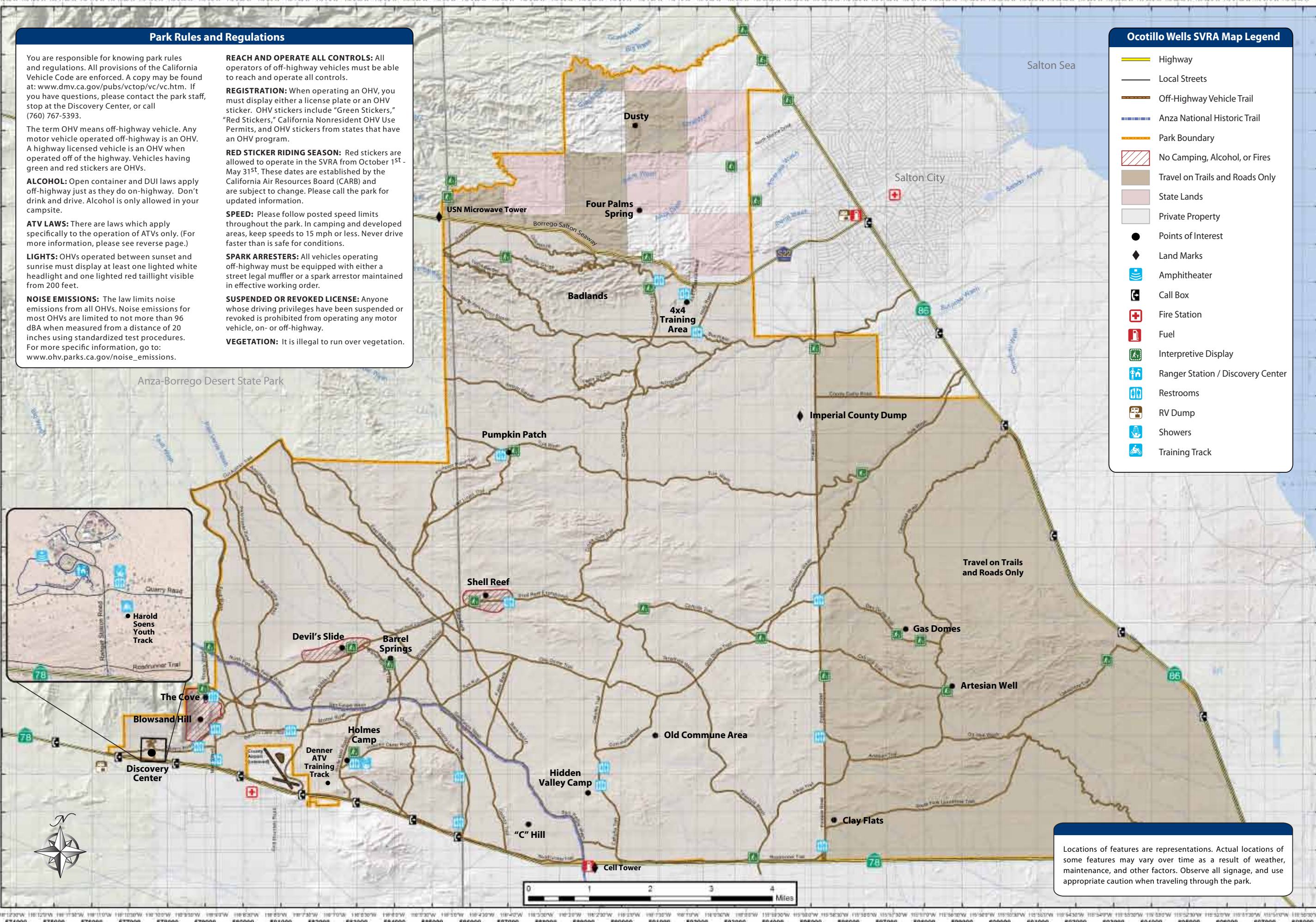
SPARK ARRESTERS: All vehicles operating off-highway must be equipped with either a street legal muffler or a spark arrestor maintained in effective working order.

SUSPENDED OR REVOKED LICENSE: Anyone whose driving privileges have been suspended or revoked is prohibited from operating any motor vehicle, on- or off-highway.

VEGETATION: It is illegal to run over vegetation.

Ocotillo Wells SVRA Map Legend

- Highway
- Local Streets
- Off-Highway Vehicle Trail
- Anza National Historic Trail
- Park Boundary
- No Camping, Alcohol, or Fires
- Travel on Trails and Roads Only
- State Lands
- Private Property
- Points of Interest
- Land Marks
- Amphitheater
- Call Box
- Fire Station
- Fuel
- Interpretive Display
- Ranger Station / Discovery Center
- Restrooms
- RV Dump
- Showers
- Training Track



Locations of features are representations. Actual locations of some features may vary over time as a result of weather, maintenance, and other factors. Observe all signage, and use appropriate caution when traveling through the park.